



# Unit 5.1

Name \_\_\_\_\_

Choose one of the machines below. Answer the following questions about it.

1. Machine name: \_\_\_\_\_

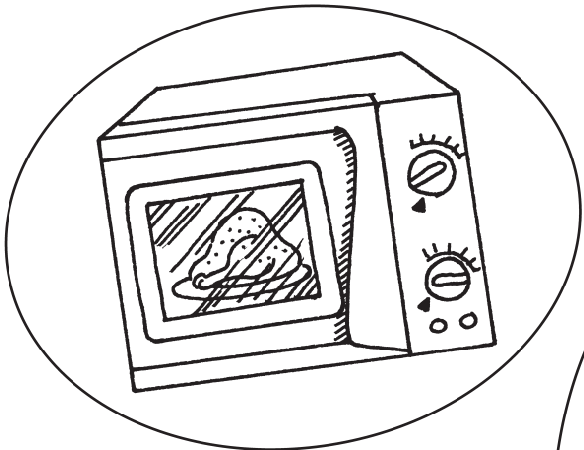
2. What does it do? \_\_\_\_\_

3. How do you work it? \_\_\_\_\_

\_\_\_\_\_

\_\_\_\_\_

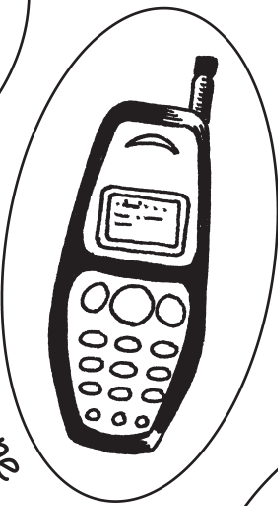
\_\_\_\_\_



microwave



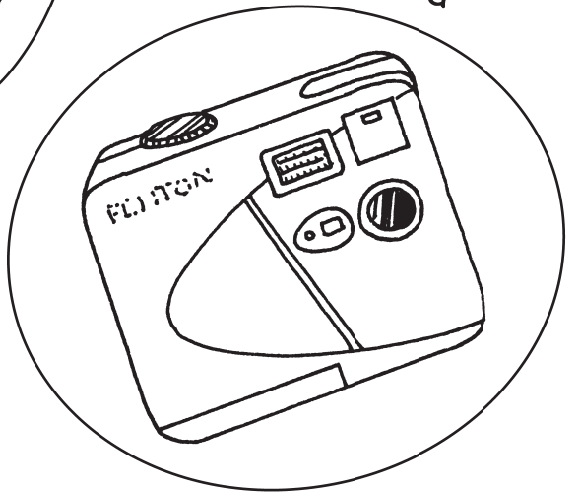
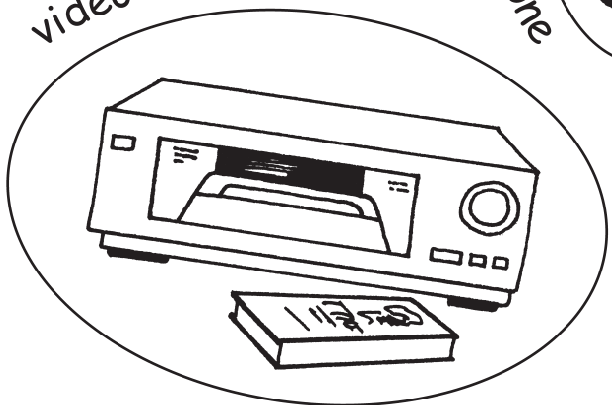
photocopier



mobile phone

video recorder

digital camera





These instructions will turn a lamp in output 1 on for 3 seconds and then turn it off.

turn output 1 on  
wait 3  
turn output 1 off

Write similar commands to control these devices plugged into other sockets.

1. Turn a lamp on for 5 seconds, off for 10 seconds, on again for 5 seconds, then off.  
**Commands:**

2. Turn a buzzer on for 3 x 5 second blasts, with a 10 second pause in between.  
**Commands:**

3. Turn a motor on for 20 seconds, off for 10 seconds, on for a further 20 seconds, then off.  
**Commands:**



## Using commands

1. Set up your control box so that you have a lamp (bulb) plugged into output 1.



2. Now type in the commands:  
turn output 1 on  
wait 5  
turn output 1 off

When you activate this command it should turn the bulb in output 1 on for 5 seconds and then it will go off.

3. Try using similar commands to control devices plugged into other sockets, e.g. you could put a motor in output 2 → turn output 2 on...
4. Write down any commands you have used to share with the rest of your class.

